



## Solution Guide

mySCADA introduces the most competitive advantages and features of the system. Those features were collected for more than 20 years and developed based on the customer real requirements.

Your partner in visualization

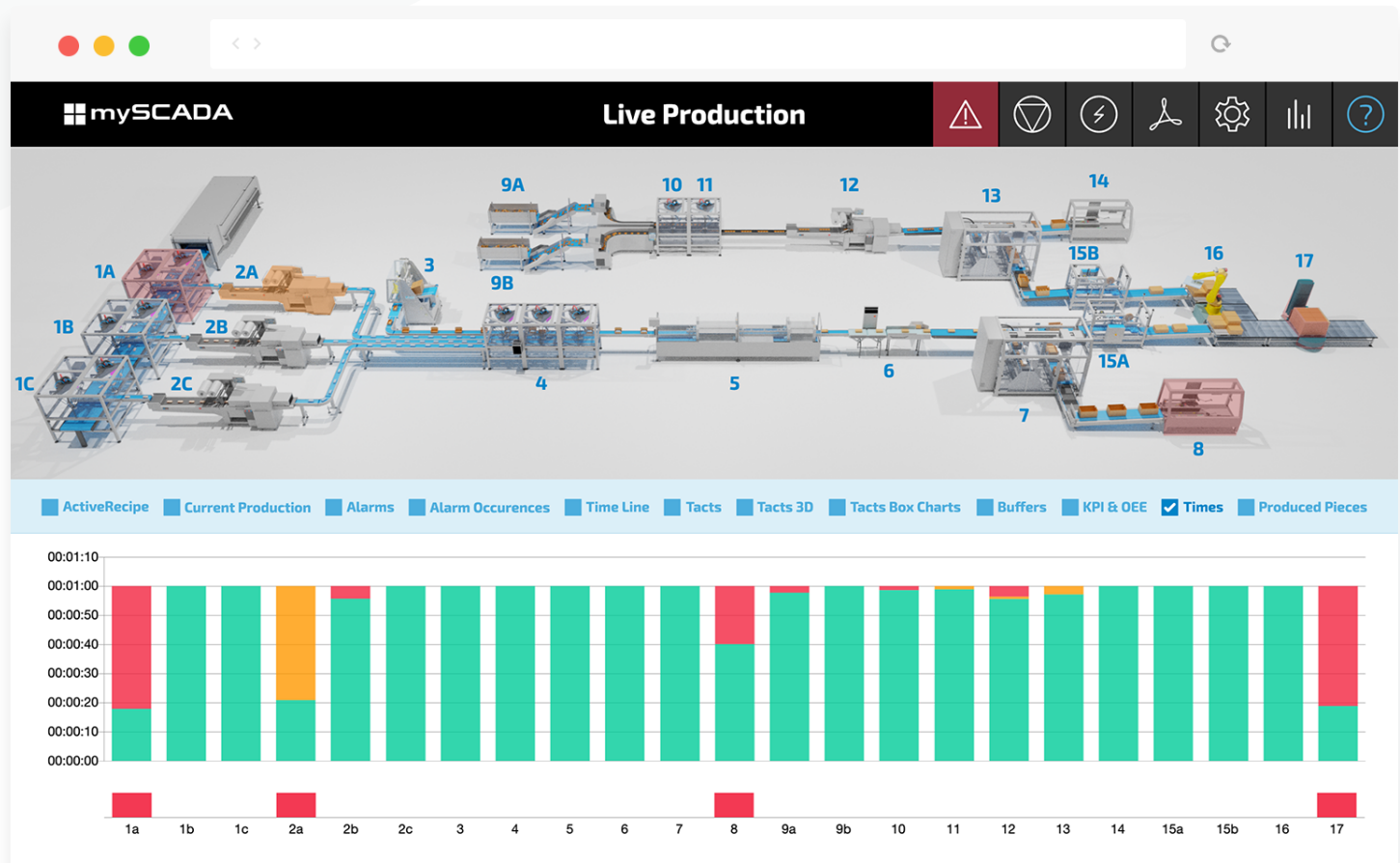
# 1. Production overview

## Our features:

- general overview of the technology
- timeline tool, collection of all live data, modern widgets
- KPI and OEE indicators

## Your advantages:

Live visualization offers a fast reaction to events immediately as they occur. Live data collection helps the production optimisation in runtime. Everyone has access to all essential data, including user management (who, when, why and how something has been changed).



## 2. Active control

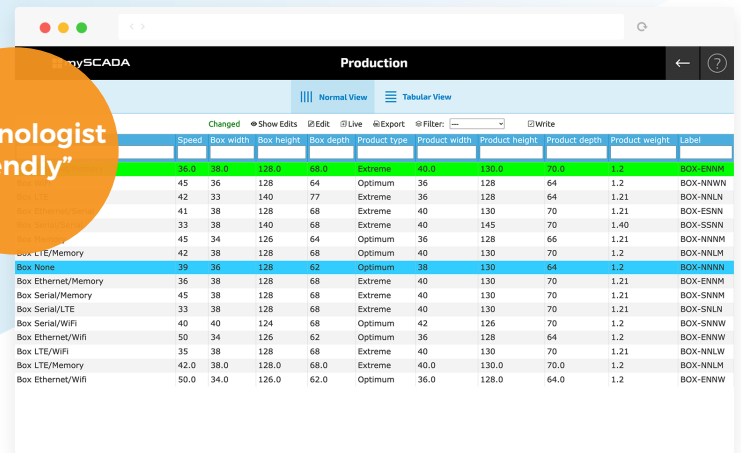
### Our features:

- active recipe management in runtime
- clear overview of recipe changes with user management
- connection with other IT systems like SAP, MES

### Your advantages:

Managed control of production parameters ensures stable production, minimal setup time, easy repeatability of orders and maximal elimination of human errors. With active control, production can be optimised on the fly.

"Technologist friendly"



The screenshot shows the 'Production' view in mySCADA. It features a table with columns for various production parameters. The table is divided into two sections: 'Box' and 'Box Ethernet'. The 'Box' section includes parameters like Speed, Box width, Box height, Box depth, Product type, Product width, Product height, Product depth, Product weight, and Label. The 'Box Ethernet' section includes parameters like Box None, Box Ethernet/Memory, Box Serial/Memory, Box Serial/LTE, Box Serial/WiFi, Box Ethernet/WiFi, Box LTE/WiFi, Box LTE/Memory, and Box Ethernet/WiFi. The table is currently in 'Normal View' and shows data for a specific production run.

Speed	Box width	Box height	Box depth	Product type	Product width	Product height	Product depth	Product weight	Label
45	36	128	64	Optimum	36	128	64	1.2	BOX-NNWN
42	33	140	77	Extreme	36	128	64	1.21	BOX-NNLN
41	38	128	68	Extreme	40	130	70	1.21	BOX-ESNN
33	38	140	68	Extreme	40	145	70	1.40	BOX-SSNN
45	34	126	64	Optimum	36	128	66	1.21	BOX-NNNM
42	38	128	68	Optimum	40	130	70	1.2	BOX-NNLM
39	36	128	62	Optimum	38	130	64	1.2	BOX-NNNN
36	38	128	68	Extreme	40	130	70	1.21	BOX-ENNM
45	38	128	68	Extreme	40	130	70	1.21	BOX-SNNM
33	38	128	68	Extreme	40	130	70	1.21	BOX-SNLM
40	40	124	68	Optimum	42	126	70	1.2	BOX-SNNW
50	34	126	62	Optimum	36	128	64	1.2	BOX-ENNW
35	38	128	68	Extreme	40	130	70	1.21	BOX-NNLW
42.0	38.0	128.0	68.0	Extreme	40.0	130.0	70.0	1.2	BOX-NNLM
50.0	34.0	126.0	62.0	Optimum	36.0	128.0	64.0	1.2	BOX-ENNW

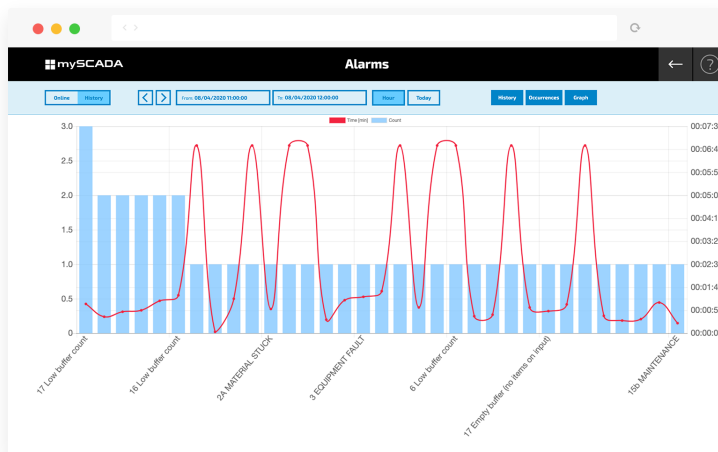
## 3. Alarming system

### Our features:

- frequency, occurrence and time duration statistics
- notifications to responsible personnel via SMS/email

### Your advantages:

The alarm statistics and notifications enable fast elimination of errors just when they occur, decrease downtimes and help prioritize error solving process.



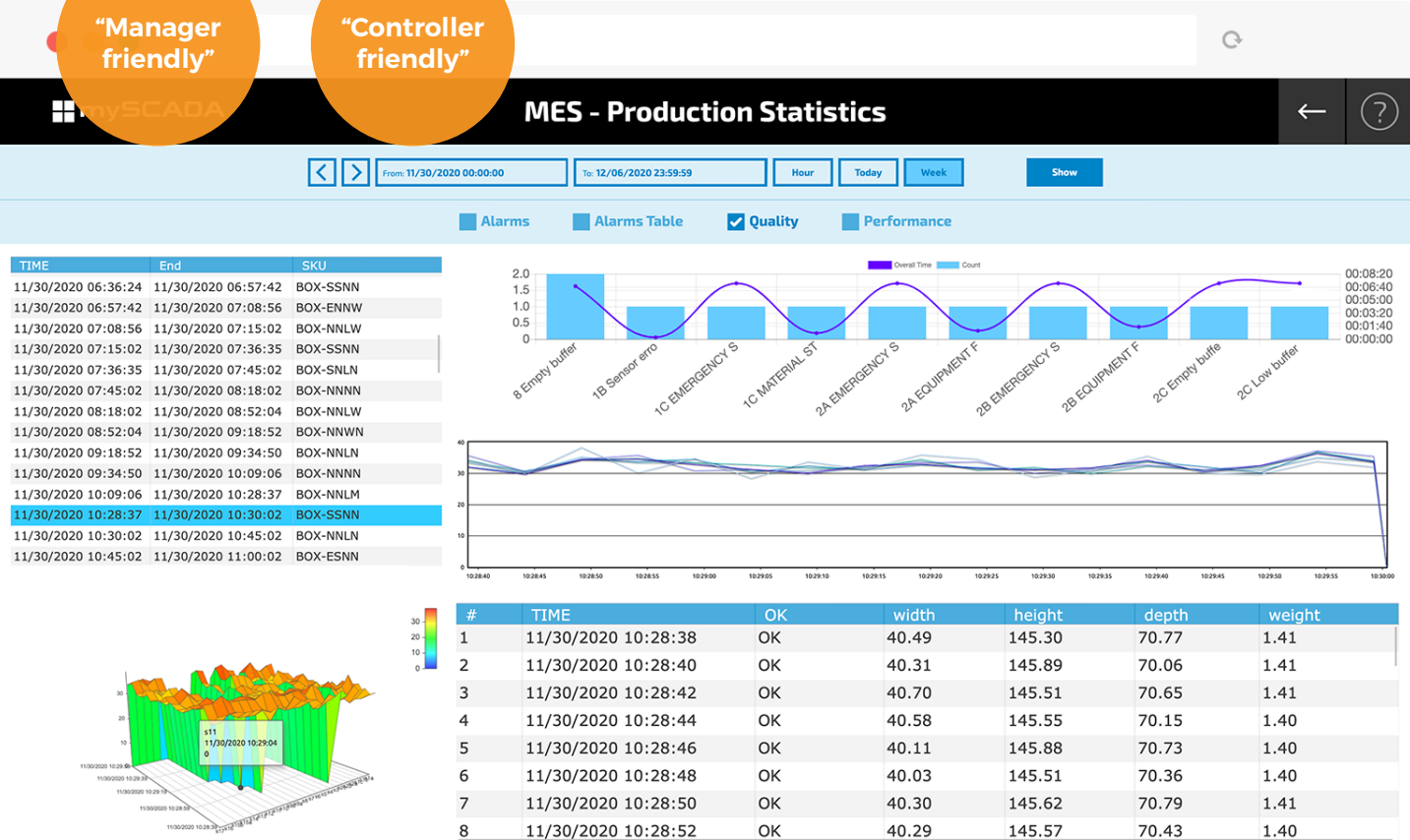
## 4. Production statistics

### Our features:

- overview of clear historical data
- statistics of orders
- product traceability
- quality measurement tool

### Your advantages:

All statistics about orders, production setup, performance, user actions, etc. help to increase the production, eliminate the shortcomings and optimize all processes. This module is simple to use, highly customizable MES system.



## 5. Maintenance and predictive maintenance

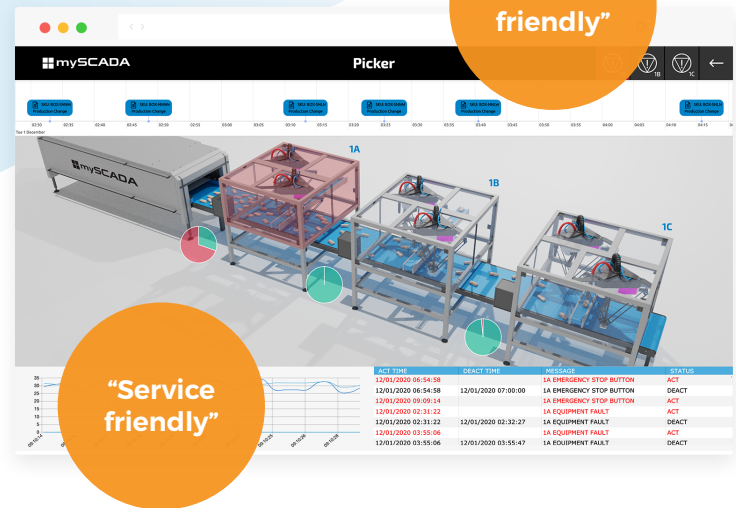
### Our features:

- live forms for regular maintenance
- predictive maintenance tool

### Your advantages:

Online maintenance materials give a quick overview of all service actions in the factory. In connection with alarm notifications, the repair process is faster and more effective.

Thanks to predictive maintenance tool, the number of downtimes and unexpected errors is minimized allowing a rapid cost reduction when changing the spare parts (just in time).



**"Service friendly"**

## 6. Paperless production

### Our features:

- manuals, diagrams, other documentation available online
- all changes in the fly

### Your advantages:

The paperless factory is an integral part of Industry 4.0 concept. Having paperless production saves not only time (data available in real-time), but it saves operating costs, increases productivity and saves the environment at the same time.



## Other features

Scalable vector graphics

Reporting tool

Major PLC brands supported

High level of security

**Completely web-based**

OS independence

Easy to setup

Remote access from anywhere

## About mySCADA Technologies

**mySCADA Technologies** is an independent Czech company having over 20 years of **experience in industrial automation**. We are focused not only on development but also on expertise and application of industrial **SCADA / MES / I 4.0 / HMI** systems creating competitive advantages for our clients.

To maintain high quality standards, we develop and produce our products exclusively in Europe. We do have subsidiary in Germany and a local offices all around the world.



**info@myscada.org**



**sales@myscada.org**

Your partner in visualization