



GETTING HELP

Thank you for purchasing our product. For inquiries, do not hesitate to contact us:

info@myscada.org

For technical support, go to our website and submit a ticket:

<https://www.myscada.org/submit-ticket>

For more information, see the online manual on our website:

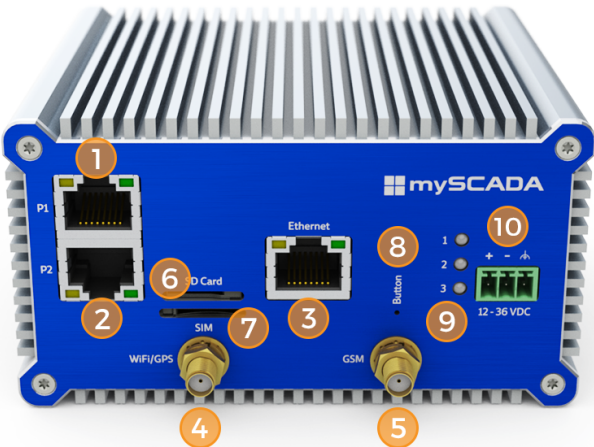
<https://www.myscada.org/mybox8-manual>



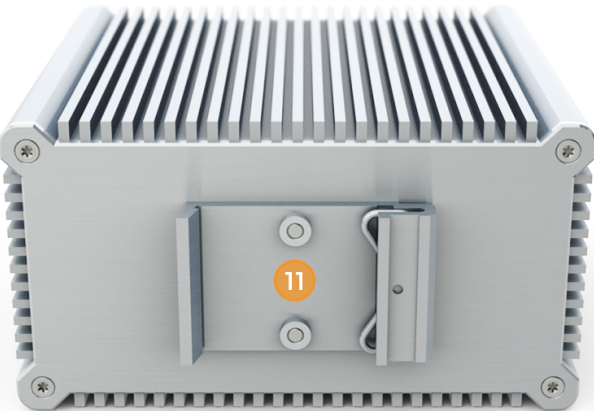
WARRANTY

All products manufactured by mySCADA Technologies s.r.o.™ are under warranty (regarding defective materials) for a period of one year from the date of delivery to the original purchaser.

HARDWARE FEATURES



Features	Description
1	Ethernet/Serial port
2	Ethernet/Serial port
3	Ethernet port
4	Wifi/GPS Antenna output
5	GSM Antenna output
6	Micro SD card slot
7	SIM card compartment
8	Reset/Switch-off pin hole
9	Status LED indicators
10	Power supply socket (12-36 V DC)



Features	Description
11	DIN rail holder

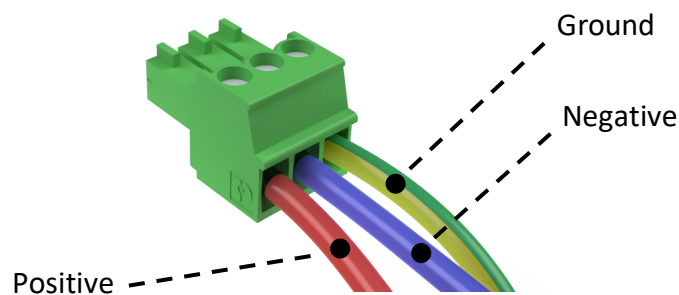
PACKAGE CONTENT

1x myBOX,
1x package with necessary accessories for installation,
1x quick guide.

FIRST BOOT

Before you install and wire any device, make sure to disconnect the electric power from the system! Strip the ends of the cable so it could be slipped into the supplied green connector (as shown on the picture below). Do not forget to check the correct polarity! Tighten the terminal screw using a small flat-blade screwdriver.

Plug electricity cable into myBOX **which must be in the range 12~36 V DC**.



When the wires are attached, plug in the green connector to the green socket, located in the right corner of the front panel and plug it into the electrical socket. The device automatically starts up and performs the initialization process, indicated by the LED status indicators.

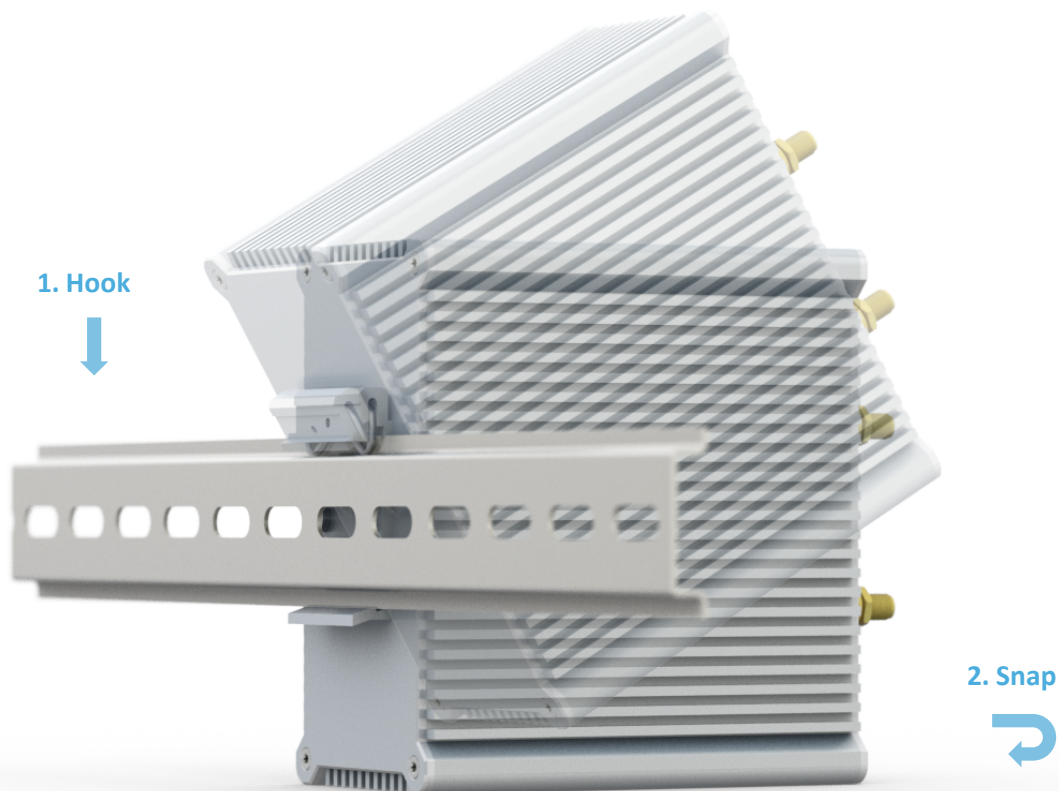
INSERTING SIM/SD CARD

To insert SIM/SD card simply push SIM/SD card gently into the slot until it clicks firmly into place. Follow the directions as shown on the picture below.



MOUNTING THE DEVICE

The device can be mounted to **EN50022-35×7.5** or **EN50022-35×15** DIN rails. There is no need for using any screwdrivers or tools. Simply hook the top slot over the DIN rail and then, while pressing the device down against the top of the rail, snap the bottom of the device into position.



To remove your controller from the DIN rail press the bottom jutting part of the holder (you may need a screw driver to do so) and release the device from the DIN rail by carefully pulling it up and towards you.

The examples and diagrams in this manual are included solely for illustrative purposes. In no case is mySCADA technologies responsible or liable for indirect or consequential damages resulting from the use or application of this equipment. Reproduction of the contents of this manual, in whole or in part, without written permission of mySCADA Technologies, is prohibited. mySCADA Technologies reserves the right to change this manual at any time without notification.

Copyright – ©mySCADA Technologies s.r.o.

Trademark – the names used for identification are all registered trademarks of their respective companies.